

AM 5200-Farm Grain Moisture Tester

A new farm moisture tester using the same USDA technology as elevators

Perten
INSTRUMENTS
Analysis with Value



AM 5200-Farm

Test hot grain from the dryer – No waiting for grain to cool - minimize temperature errors and risk
Fast & accurate – Moisture, test weight, & temperature in 25 seconds

Simple operation – Pour and GO

Robust – It's a solid 40 lbs. for a reason

Rapid payback - Stop over drying, save dryer costs, and match the moisture at the local elevator

Test frozen stored grain – Up to 18% moisture

Data storage - Test results, date, time, and your farm or field ids are easily stored and exported

USB connectivity - Connect and supply results, farm, field info etc. to farm management software

Perten is pleased to present the AM 5200-Farm. Based on the design of our market leading AM 5200-A USDA Certified as UGMA compatible and NTEP approved meter, the AM 5200-Farm uses the same technology and same calibrations as the official meters. Producers can now be assured of accurate on-farm grain moisture measurements.

What can a quality moisture meter do for your farm?

- Protect your grain when storing by reducing risk for mold and toxin growth by knowing the real, accurate moisture content.
- Optimize grain drying by monitoring moisture values in essentially real-time on hot grain. Allows you to hit the optimum moisture value without the time and expense of over-drying.
- Since the AM 5200-Farm uses the same, new technology as the USDA, elevators, and terminals, there will be no surprises at delivery.

Read much more about moisture meters and protecting the value of your grain at:

www.perten.com/gsf-perten

or scan the QR code to request more info and visit the website on your smartphone or tablet.



With 50+ years supplying testing and measuring devices to the grain industry, producers are choosing Perten to meet their grain analysis needs.

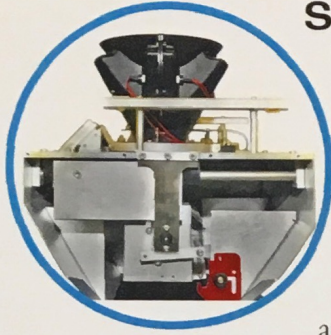
Why should you buy from Perten & our Partners?

Simply stated, the combination of our partner's support capabilities and the industry's best farm grain moisture meter assures that you are getting the best total solution. Superior service and support of superior grain moisture meters.



www.perten.com/amfarm

Superior by Design

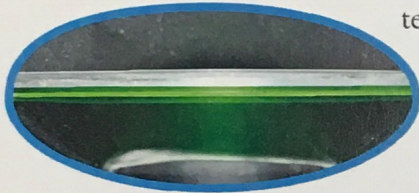


Solid Foundation

It's all about quality. The AM 5200-Farm is made of heavy metal sheeting and Delrin. The build quality extends instrument life and reduces damage potential during relocation and shipping. It's a solid 45 lbs. for a reason.

Superior Temperature Sensing

A continuous strip of copper (6.8in²) makes contact with hundreds of kernels for a precise sample temperature measurement over a wide temperature range.

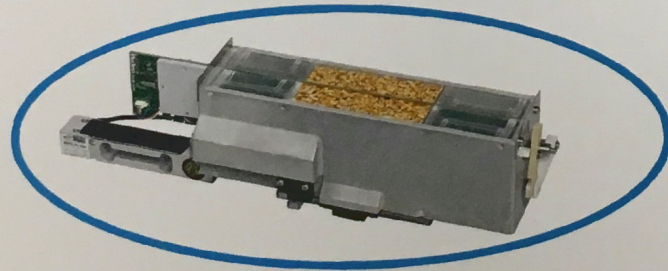


The large area/low mass means quick response times when there is a large disparity between room

temperature and grain temperature, down to -13°F. It means better accuracy, shorter analysis times, and little or no cleaning.

Measurement Cell & PC Board

The single piece cast cell ensures accurate measurements of volume/density through precise control of cell dimensions. The RF electronics are built directly into the cell center divide eliminating cabling and removes impedance matching issues over time due to connector degradation.

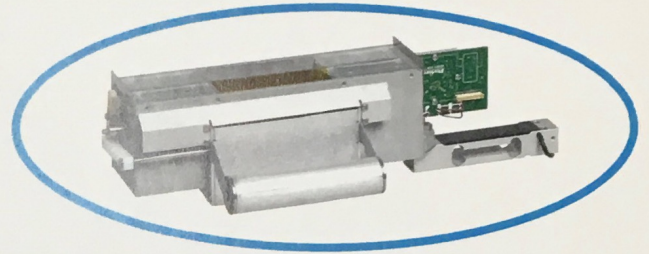


Experts in Grain Testing.

Perten
INSTRUMENTS
Analysis with Value

Lower Cell Door

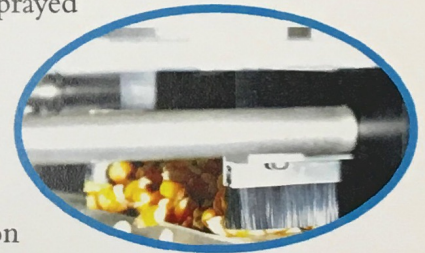
The door employs a self-cleaning firm "snap action" close and is gravity driven. The "snap action" is designed to shake loose any build-up of material on the lower door. You can be confident the cell volume will not change due to dust build-up resulting in erroneous weight and volume measurements. It also means no grain jams due to hinges and springs as in competitor instruments.



Sample Strike-off

The sample strike-off is critical to controlling flow of product through the instrument. Our design minimizes debris build-up in the instrument.

Grain is not sprayed throughout the interior. The AM 5200-Farm uses 3 brushes to direct grain to the collection drawer.



Specifications

Products: Grains, oilseeds, pulses, lentils & more

Parameters: Moisture, test weight, & temperature

Analysis Time: ~ 25 seconds

Display: 5.7" color touch screen

Connectivity: Ethernet, USB

Technique: RF dielectric constant at 150 Mhz

Sample Temperature: -13 to 150 F (moisture <18%); 32 to 113 F (moisture >18%)

Sample Size: ~ 1 quart (700 ml)

Power Requirement: 115/230V, 50/60 Hz

Net Weight (lb): 40.3

Your local dealer.

Perten Instruments, Inc.
6444 S. 6th Street Road
Springfield, Illinois 62712
Tel: 1-800-627-6702
jharris@perten.com